



# Service Manual / Manuel de Service

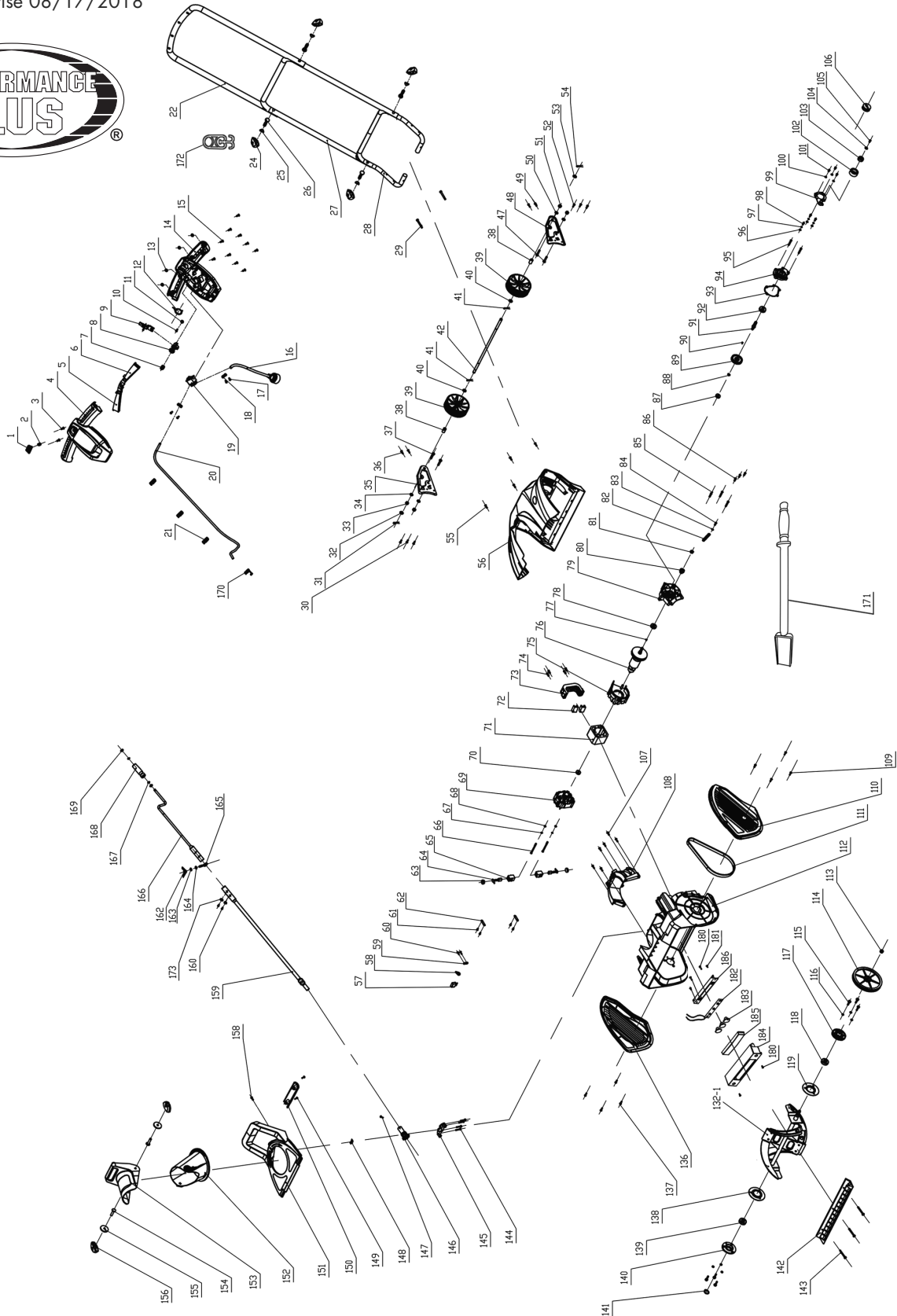
## 18" Electric Snow Thrower

### Souffleuse à Neige Électrique de 18"



Revised/Revisé 08/17/2018

9918





## Parts Pricing List / Liste de Prix des Pièces

# 9918

Diag.	Order # Com.	English Description	Description Française	Qty./Qté.	Price/Prix
1	50-99880010	SAFETY BUTTON	BOUTON DE SÉCURITE	1	\$2.91
2	50-99880020	SPRING	RESSORT	1	\$2.12
3	50-99880030	SCREW	VIS	2	\$1.58
4	50-99880040	UPPER SWITCH BOX	BOÎTIER DU HAUT	1	\$7.92
5	50-99880050	LEFT SWITCH TRIGGER	GACHETTE GAUCHE	1	\$5.26
6	50-99880060	RIGHT SWITCH TRIGGER	GACHETTE DROITE	1	\$5.26
7	50-99880070	SPRING	RESSORT	1	\$2.12
8	50-99880080	PUSH ROD	TIGE DE POUSSÉE	1	\$2.60
9	50-99880090	SWITCH BUTTON	BOUTON DE L'INTERRUPTEUR	1	\$7.92
10	50-99880100	SCREW	VIS	1	\$1.58
11	50-99880110	WASHER	RONDELLE	1	\$1.45
12	50-99880120	SPRING	RESSORT	1	\$2.12
13	50-99880130	O-RING	JOINT D'ÉTANCHÉITÉ	4	\$1.45
14	50-99880140	LOWER SWITCH HOUSING	BOÎTIER DE L'INTERRUPTEUR DU BAS	1	\$7.92
15	50-99880150	SCREW	VIS	10	\$1.58
16	50-99880160	POWER CORD	CORDON D'ALIMENTION	1	\$13.24
17	50-99880170	SCREW	VIS	4	\$1.58
18	50-99880180	CORD RETAINER	ATTACHE CORDON	2	\$2.60
19	50-99880190	SWITCH	INTERRUPTEUR	1	\$13.24
20	50-99880200	CONNECTING LINE (120V)	FIL ÉLECTRIQUE (120V)	1	\$14.57
21	50-99880210	CLIP	ATTACHE	3	\$1.58
22	50-99880220	UPPER HANDLE	POIGNÉE SUPÉRIEURE	1	\$13.24
24	50-99880240	KNOB	BOUTON DE VERROUILLAGE	4	\$3.93
25	50-99880250	CURVED WASHER	RONDELLE COURBÉE	4	\$1.45
26	50-99880260	SPECIAL BOLT	BOULON SPÉCIALE	4	\$2.60
27	50-99880270	MIDDLE TUBE	TUBE DU MILIEU	1	\$10.58
28	50-99880280	LOWER TUBE	TUBE DU BAS	1	\$7.92
29	50-99880290	SELF-TAPPING SCREW	VIS AUTOTARAUDEUSE	2	\$2.12
30	50-99880300	SCREW	VIS	3	\$2.50
31	50-99880310	COTTER PIN	GOUPILLE FENDUE	1	\$2.33
32	50-99880320	WASHER	RONDELLE	1	\$2.50
33	50-99880330	HEX. NUT	ÉCROU HEXAGONAL	2	\$3.42
34	50-99880340	WASHER	RONDELLE	2	\$2.50
35	50-99880350	WHEEL BRACKET (LEFT)	SUPPORT DE ROUE (GAUCHE)	1	\$5.78
36	50-99880360	PAN HD SCREW	VIS A TÊTE BOMBÉE	2	\$2.50
37	50-99880370	HEX. BOLT	BOULON HEXAGONAL	2	\$3.23
38	50-99880380	SPACER BUSHING	BAGUE D'ESPACEUR	2	\$5.78
39	50-99880390	WHEEL	ROUE	2	\$17.49
40	50-99880400	WASHER	RONDELLE	2	\$1.74
41	50-99880410	COTTER PIN	GOUPILLE FENDUE	2	\$2.33
42	50-99880420	WHEEL AXLE	TIGE DE LA ROUE	1	\$8.70
47	50-99880470	SCREW	VIS	2	\$3.23
48	50-99880480	WHEEL BRACKET (RIGHT)	SUPPORT DE ROUE (DROIT)	1	\$5.78
49	50-99880490	SCREW	VIS	2	\$2.50
50	50-99880500	WASHER	RONDELLE	2	\$2.50
51	50-99880510	HEX. NUT	ÉCROU HEXAGONAL	2	\$3.42
52	50-99880520	SELF-TAPPING SCREW	VIS AUTOTARAUDEUSE	3	\$2.50

Pricing subject to change without prior notice. / Prix sujet à changement sans préavis.



## Parts Pricing List / Liste de Prix des Pièces

# 9918

Diag.	Order # Com.	English Description	Description Française	Qty./Qté.	Price/Prix
53	50-99880530	WASHER	RONDELLE	1	\$2.50
54	50-99880540	COTTER PIN	GOUILLE FENDUE	1	\$2.33
55	50-99880550	SELF-TAPPING SCREW	VIS AUTOTARAUDEUSE	4	\$2.50
56	50-99880560	MAIN COVER	COUVERCLE	1	\$62.88
57	50-99880570	OVERLOAD PROTECTION	PROTECTION DE SURCHARGE	1	\$18.95
58	50-99880580	CAP	CAPUCHON	1	\$5.52
59	50-99880590	CORD RETAINER	ATTACHE CORDON	1	\$2.33
60	50-99880600	SELF-TAPPING SCREW	VIS AUTOTARAUDEUSE	2	\$2.50
61	50-99880610	SELF-TAPPING SCREW	VIS AUTOTARAUDEUSE	4	\$2.50
62	50-99880620	BRUSH HOLDER BRACKET	PORTE-BALAI	2	\$2.85
63	50-99880630	BRUSH COVER	COUVERCLE DU BALAI	2	\$3.79
64	50-99880640	CARBON BRUSH	BALAI DE CARBONE	2	\$8.70
65	50-99880650	BRUSH HOLDER	PORTE-BALAI	2	\$7.24
66	50-99880660	SCREW	VIS	2	\$4.31
67	50-99880670	SPRING WASHER	RONDELLE À RESSORT	2	\$2.38
68	50-99880680	WASHER	RONDELLE	2	\$2.38
69	50-99880690	REAR MOTOR BRACKET	SUPPORT ARRIÈRE DU MOTEUR	1	\$6.72
70	50-99880700	BALL BEARING	ROULEMENT À BILLES	1	\$22.12
71	50-99880710	FIELD COIL	BOBINE D'ENTRAÎNEMENT	1	\$29.20
72	50-99880720	SHOCK ABSORPTION	AMORTISSEUR	2	\$3.79
73	50-99880730	MOTOR FIXING BOARD	FIXATION DU MOTEUR	1	\$11.63
74	50-99880740	SCREW	VIS	4	\$2.50
75	50-99880750	FRONT MOTOR BRACKET	SUPPORT AVANT DU MOTEUR	1	\$10.17
76	50-99880760	ARMATURE	ARMATURE	1	\$32.13
77	50-99880770	WOODRUFF KEY	CLÉ WOODRUFF	1	\$3.18
78	50-99880780	BALL BEARING	ROULEMENT À BILLES	1	\$22.12
79	50-99880790	MIDDLE COVER	COUVERCLE MILIEU	1	\$10.17
80	50-99880800	SMALL GEAR	PETITE ENGRENAGE	1	\$4.31
81	50-99880810	NUT	ÉCROU	1	\$2.85
82	50-99880820	SPRING	RESSORT	1	\$3.21
83	50-99880830	WASHER	RONDELLE	1	\$1.74
84	50-99880840	SCREW	VIS	1	\$2.50
85	50-99880850	SCREW	VIS	3	\$2.50
86	50-99880860	SELF-TAPPING SCREW	VIS AUTOTARAUDEUSE	3	\$2.50
87	50-99880870	BALL BEARING	ROULEMENT À BILLES	1	\$22.12
88	50-99880880	RETAINING RING/SHAFT	ANNEAU DE RETENU/ TIGE	1	\$3.79
89	50-99880890	LARGE GEAR	GRANDE ENGRENAGE	1	\$8.70
90	50-99880900	WOODRUFF KEY	CLÉ WOODRUFF	1	\$2.33
91	50-99880910	OUTPUT SHAFT	TIGE DE TRANSMISSION	1	\$3.79
92	50-99880920	BALL BEARING	ROULEMENT À BILLES	1	\$17.88
93	50-99880930	GASKET	JOINT D'ÉTANCHÉITÉ	2	\$5.26
94	50-99880940	COVER	COUVERCLE	2	\$7.24
95	50-99880950	SELF-TAPPING SCREW	VIS AUTOTARAUDEUSE	2	\$2.50
96	50-99880960	WASHER	RONDELLE	3	\$2.50
97	50-99880970	SPRING WASHER	RONDELLE A RESSORT	3	\$2.50
98	50-99880980	SCREW	VIS	3	\$2.50
99	50-99880990	PULLEY BRACKET	SUPPORT DE POULIE	1	\$5.26

Pricing subject to change without prior notice. / Prix sujet à changement sans préavis.



## Parts Pricing List / Liste de Prix des Pièces

# 9918

Diag.	Order # Com.	English Description	Description Française	Qty./Qté.	Price/Prix
100	50-99881000	WASHER	RONDELLE	3	\$2.69
101	50-99881010	PAN HD SCREW	VIS A TÊTE BOMBÉE	3	\$2.50
102	50-99881020	TENSE WHEEL	ROUE DE TENSION	1	\$8.04
103	50-99881030	BALL BEARING	ROULEMENT À BILLES	1	\$20.28
104	50-99881040	WASHER	RONDELLE	1	\$1.74
105	50-99881050	PAN HD SCREW	VIS À TÊTE BOMBÉE	1	\$2.50
106	50-99881060	SMALL PULLEY	PETITE POULIE	1	\$8.04
107	50-99881070	SELF-TAPPING SCREW	VIS AUTOTARAUDEUSE	6	\$2.50
108	50-99881080	UPPER HOUSING	BOÎTIER SUPÉRIEUR	1	\$9.65
109	50-99881090	SELF-TAPPING SCREW	VIS AUTOTARAUDEUSE	4	\$2.50
110	50-99881100	LEFT COVER	COUVERCLE GAUCHE	1	\$14.56
111	50-99881110	BELT	COURROIE	1	\$18.95
112	50-99881120	HOUSING	BOÎTIER	1	\$87.77
113	50-99881130	NUT	ÉCROU	1	\$1.74
114	50-99881140	LARGE PULLEY	GRANDE POULIE	1	\$13.10
115	50-99881150	HEX. BOLT	BOULON HEXAGONAL	6	\$1.74
116	50-99881160	SPRING WASHER	RONDELLE À RESSORT	6	\$2.50
117	50-99881170	BEARING SEAT	SIÈGE DU ROULEMENT	1	\$11.11
118	50-99881180	BALL BEARING	ROULEMENT À BILLES	1	\$18.42
119	50-99881190	ROLLER FIXED PLATE	PLAQUE FIXE	1	\$7.24
132-1	50-99881321	COMPLETE AUGER ASSEMBLY	PALE DE ROTOR COMPLÈT ASS.	1	\$43.84
136	50-99881360	RIGHT COVER	COUVERCLE DROIT	1	\$14.56
137	50-99881370	SELF-TAPPING SCREW	VIS AUTOTARAUDEUSE	4	\$2.50
138	50-99881380	ROLLER FIXED PLATE	PLAQUE FIXE	1	\$7.24
139	50-99881390	BALL BEARING	ROULEMENT À BILLES	1	\$18.42
140	50-99881400	BEARING SEAT	SIÈGE DU ROULEMENT	1	\$12.58
141	50-99881410	RETAINING RING/ SHAFT	ANNEAU DE RETENU/ TIGE	1	\$2.91
142	50-99881420	SCRAPER	GRATTOIR	1	\$8.70
143	50-99881430	SELF-TAPPING SCREW	VIS AUTOTARAUDEUSE	3	\$2.50
144	50-99881440	SCREW	VIS	4	\$2.50
145	50-99881450	PLATE	PLAQUE	1	\$5.26
146	50-99881460	CHUTE DIRECTION	BASE DE LA MANIVELLE	1	\$9.65
147	50-99881470	SELF-TAPPING SCREW	VIS AUTOTARAUDEUSE	1	\$2.50
148	50-99881480	SPRING	RESSORT	1	\$2.33
149	50-99881490	SELF-TAPPING SCREW	VIS AUTOTARAUDEUSE	2	\$2.50
150	50-99881500	HANDLE SEAT	SIÈGE DE LA POIGNÉE	1	\$5.26
151	50-99881510	SNOW COVER	COUVERCLE DE NEIGE	1	\$35.06
152	50-99881520	DISCHARGE CHUTE	CONDUIT D'ÉJECTION INFÉRIEUR	1	\$11.63
153	50-99881530	CHUTE DEFLECTOR	DÉFLECTEUR D'ÉJECTION	1	\$14.57
154	50-99881540	SQUARE NECK BOLT	BOULON A TÊTE CARRÉE	2	\$2.33
155	50-99881550	RUBBER WASHER	RONDELLE EN CAOUTCHOUC	2	\$1.38
156	50-99881560	KNOB	BOUTON	2	\$21.88
158	50-99881580	SELF-TAPPING SCREW	VIS AUTOTARAUDEUSE	1	\$2.50
159	50-99881590	LOWER CHUTE CRANK	TIGE INFÉRIEURE	1	\$8.70
160	50-99881600	PAN HD SCREW	VIS À TÊTE BOMBÉE	2	\$2.87
162	50-99881620	WING NUT	ÉCROU PAPILLON	1	\$2.60
163	50-99881630	SPRING WASHER	RONDELLE À RESSORT	1	\$2.41

Pricing subject to change without prior notice. / Prix sujet à changement sans préavis.



## Parts Pricing List / Liste de Prix des Pièces

# 9918

Diag.	Order # Com.	English Description	Description Française	Qty./Qté.	Price/Prix
164	50-99881640	WASHER	RONDELLE	1	\$2.28
165	50-99881650	EYE BOLT W/RUBBER GROMMET	BOULON À OEIL AVEC CAOUTCHOUC	1	\$2.46
166	50-99881660	UPPER CHUTE CRANK	TIGE SUPÉRIEURE	1	\$8.70
167	50-99881670	WASHER	RONDELLE	2	\$2.51
168	50-99881680	HANDLE	POIGNÉE	1	\$3.21
169	50-99881690	RETAINING RING/ SHAFT	ANNEAU DE RETENU/ TIGE	2	\$2.42
170	50-99881700	STRAIN RELIEF	ATTACHE CORDON	1	\$2.85
171	50-99881710	SNOW CLEARING SHOVEL	BÂTON POUR DÉLOGER LA NEIGE	1	\$13.10
172	50-99881720	EXTENTION CORD RETAINER	VERROU DE LA RALLONGE	1	\$4.31
173	50-99881730	SPRING WASHER	RONDELLE À RESSORT	2	\$2.41
180	50-99181800	SCREW	VIS	1	\$1.59
181	50-99181810	WASHER	RONDELLE	2	\$1.39
182	50-99181820	LIGHT PLATE	PLAQUE DE LUMIÈRE	2	\$18.95
183	50-99181830	CONDENSER COVER	COUVERCLE DE CONDENSEUR	1	\$2.59
184	50-99181840	TRANSPARENT COVER	COUVERCLE TRANSPARENT	2	\$14.95
185	50-99181850	SCREW	VIS	1	\$1.59
186	50-99181860	PLATE COVER	COUVERCLE DE LA PLAQUE	2	\$4.59
	50-9918MBIL	BILINGUAL MANUAL FOR 9918	MANUEL BILINGUE POUR 9918	1	\$21.95