



Service Manual / Manuel de Service

10" Jobsite Saw with Folding Stand

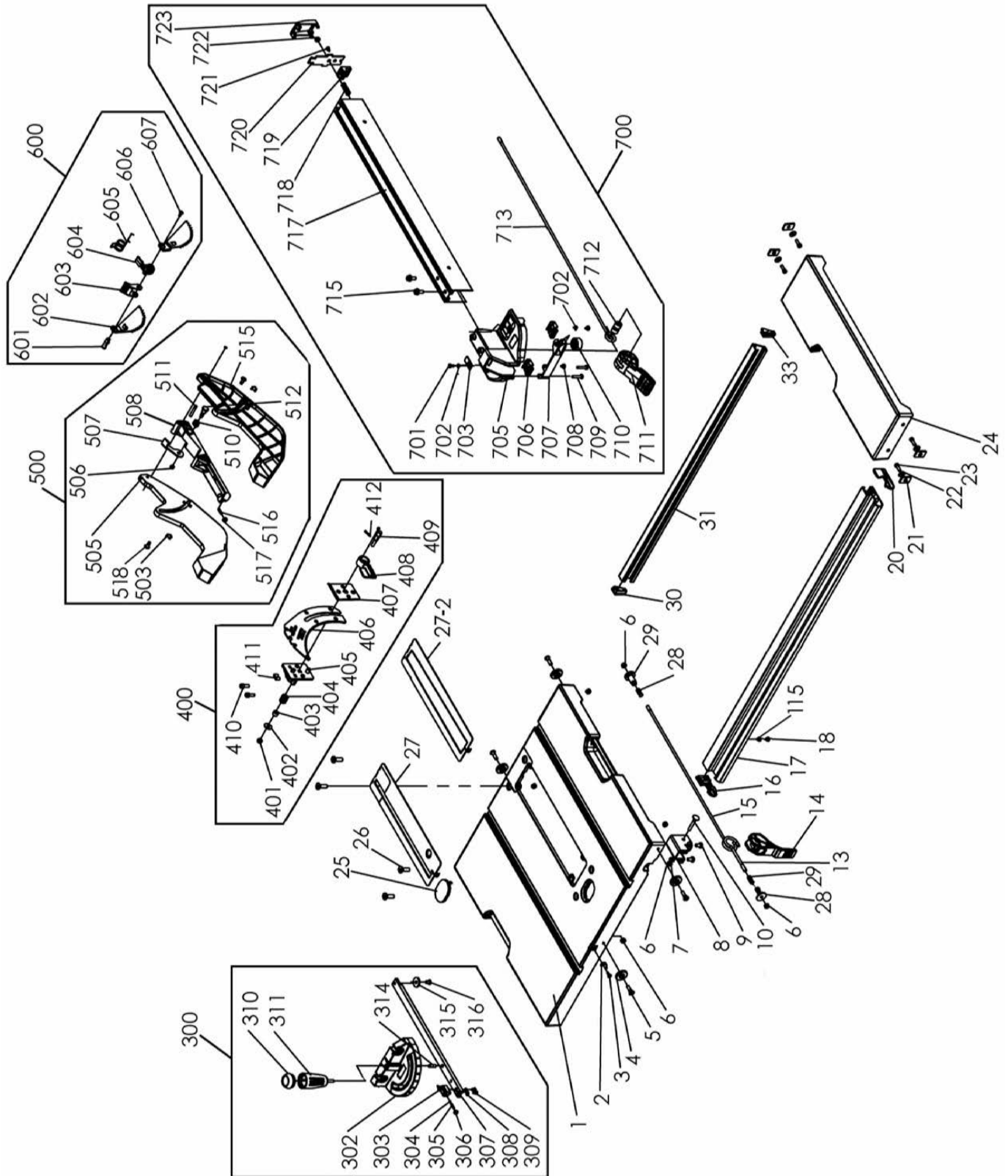
Scie de Chantier 10" avec Support Pliant



Revised/Revisé 03/15/2018

Table Diagram / Diagramme de la Table

KC-5100C





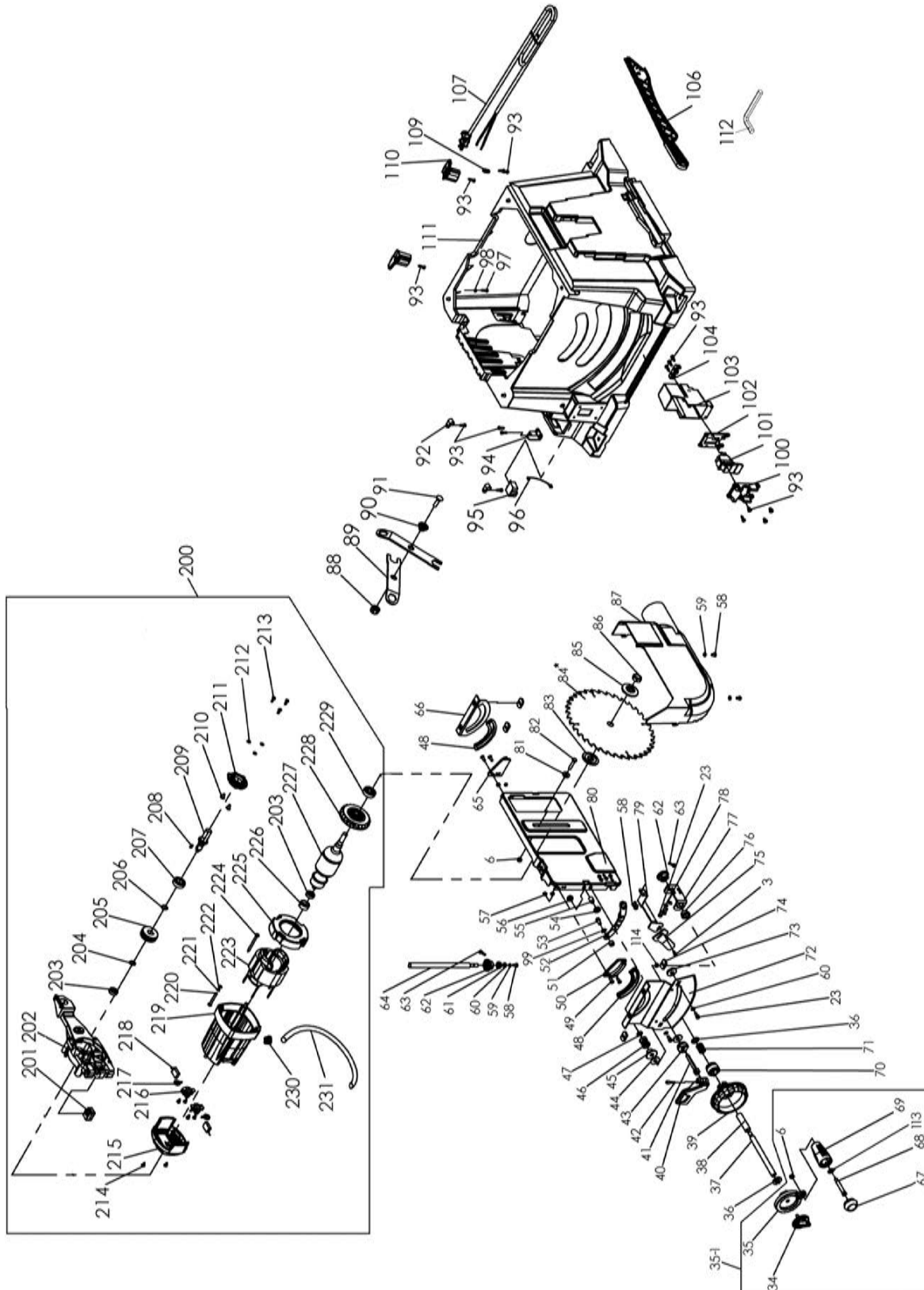
Service Manual / Manuel de Service

10" Jobsite Saw with Folding Stand Scie de Chantier 10" avec Support Pliant



Body Diagram / Diagramme du Corps

KC-5100C

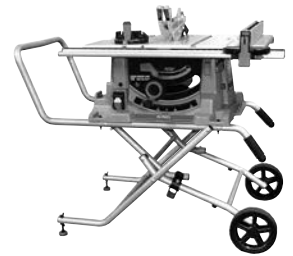




Service Manual / Manuel de Service

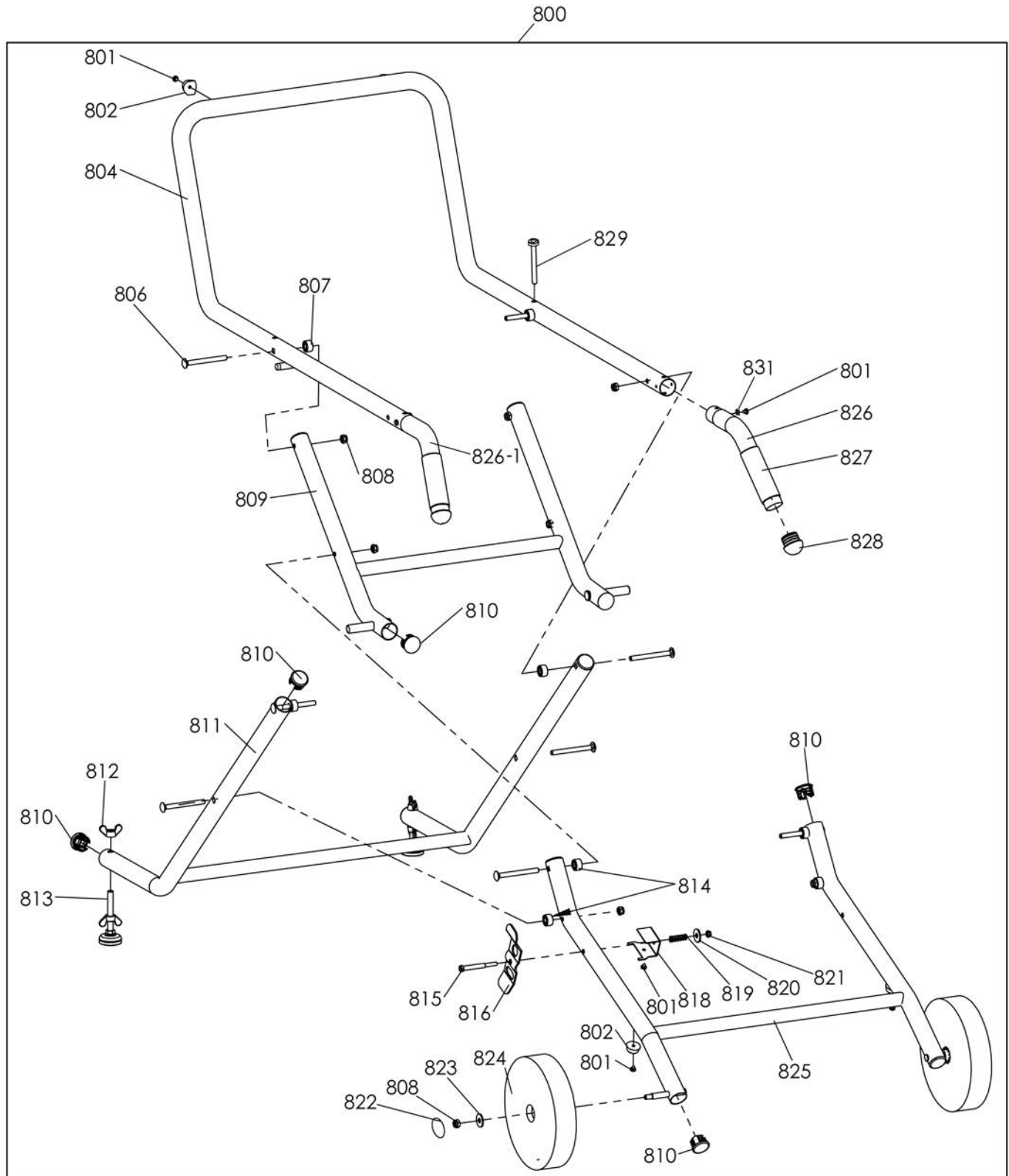
10" Jobsite Saw with Folding Stand

Scie de Chantier 10" avec Support Pliant



Stand Diagram / Diagramme du Support

KC-5100C





Parts Pricing List / Liste de Prix des Pièces KC-5100C

Diag.	Order # Com.	English Description	Description Française	Qty./Qté.	Price/Prix
1	90-51000010	TABLE	TABLE	1	\$147.80
2	90-51000020	TABLE INDICATOR	INDICATEUR DE TABLE	1	\$1.39
3	90-51000030	PAN HD SCREW	VIS A TETE BOMBEE	2	\$2.50
4	90-51000040	GUIDE WHEEL	RONDELLE GUIDE	4	\$1.89
5	90-51000050	HEX. BOLT	BOULON HEXAGONAL	4	\$2.87
6	90-51000060	NYLON HEX. NUT	ECROU HEXAGONAL AVEC NYLON	8	\$3.43
7	90-51000070	WASHER	RONDELLE	1	\$2.50
8	90-51000080	EXTENSION ROD HOLDER	PORTE-TIGE	1	\$4.32
9	90-51000090	CAP SCREW	BOULON A TETE CYLINDRIQUE	2	\$2.78
10	90-51000100	LOCKING PIECE	PIECE DE VERROUILLAGE	1	\$3.21
13	90-51000130	LOCKING LINK	DISPOSITIF DE LIAISON	1	\$3.44
14	90-51000140	EXTENSION LOCK LEVER	LEVIER DE VERROUILLAGE	1	\$6.72
15	90-51000150	LOCKING ROD	TIGE DE VERROUILLAGE	1	\$9.65
16	90-51000160	END CAP	CAPUCHON DU BOUT	1	\$5.78
17	90-51000170	FRONT RAIL	RAIL AVANT	1	\$51.17
18	90-51000180	CAP SCREW	BOULON A TETE CYLINDRIQUE	1	\$3.60
20	90-51000200	END CAP	CAPUCHON DU BOUT	1	\$5.78
21	90-51000210	EXTENSION RAIL MOUNT	BLOC DE MONTAGE DE LA RAIL	4	\$4.32
22	90-51000220	WASHER	RONDELLE	4	\$2.50
23	90-51000230	CAP SCREW	BOULON A TETE CYLINDRIQUE	4	\$3.60
24	90-51000240	EXTENSION TABLE	RALLONGE DE TABLE	1	\$43.85
25	90-51000250	MARKABLE INSERT	INSERTION INSCRIPTIBLE	1	\$3.65
26	90-51000260	COUNTERSUNK HD ALLEN SCREW	VIS FRAISEE A TETE ALLEN	4	\$3.21
27	90-51000270	TABLE INSERT	INSERTION DE TABLE	1	\$21.89
27-2	90-51000272	DADO TABLE INSERT	INSERTION DADO	1	\$21.89
28	90-51000280	COMPRESSION SPRING	RESSORT A COMPRESSION	2	\$1.45
29	90-51000290	LINKAGE PIVOT	PIVOT DE LIAISON	2	\$3.65
30	90-51000300	END CAP	CAPUCHON DU BOUT	1	\$2.85
31	90-51000310	REAR RAIL	RAIL ARRIERE	1	\$43.85
33	90-51000330	END CAP	CAPUCHON DU BOUT	1	\$2.85
34	90-51000340	BLADE HEIGHT LOCK KNOB	BOUTON DE VERROUILLAGE	1	\$2.33
35	90-51000350	ELEVATION HANDWHEEL	MANIVELLE D'ELEVATION	1	\$8.71
35-1	90-51000351	HANDWHEEL ASSEMBLY	MANIVELLE ASSEMBLEE	1	\$37.99
36	90-51000360	WASHER	RONDELLE	2	\$2.69
37	90-51000370	ACTUATING ARM	BRAS	1	\$10.18
38	90-51000380	CLAMPING LEVER	TIGE DE CRAMPONNEMENT	1	\$2.85
39	90-51000390	BEVEL CRANK WHEEL	MANIVELLE ANGLE DE BISEAU	1	\$10.18
40	90-51000400	BEVEL LOCKING WHEEL	LEVIER DE VERROUILLAGE	1	\$7.25
41	90-51000410	SHAFT	TIGE	1	\$5.78
42	90-51000420	CAP SCREW	BOULON A TETE CYLINDRIQUE	1	\$2.85
43	90-51000430	BEVEL CLAMP	CRAMP DU BISEAU	1	\$3.21
44	90-51000440	WASHER	RONDELLE	2	\$2.69
45	90-51000450	ANGLE LOCKING BUSHING	BAGUE/VERROUILLAGE D'ANGLE	1	\$4.32
46	90-51000460	COMPRESSION SPRING	RESSORT A COMPRESSION	1	\$3.79
47	90-51000470	NYLON HEX. NUT	ECROU HEXAGONAL AVEC NYLON	1	\$2.69
48	90-51000480	WASHER (HALF MOON)	RONDELLE (DEMI-LUNE)	2	\$7.25
49	90-51000490	COUNTERSUNK HD SCREW	VIS A TETE FRAISEE	4	\$3.06

Pricing subject to change without prior notice. / Prix sujet à changement sans préavis.



® Parts Pricing List / Liste de Prix des Pièces KC-5100C

Diag.	Order # Com.	English Description	Description Française	Qty./Qté.	Price/Prix
50	90-51000500	PIVOT PLATE FRONT	PLAQUE DE PIVOT AVANT	1	\$6.43
51	90-51000510	SPACER	ESPACEUR	2	\$1.45
52	90-51000520	ANGLE LOCATION PLATE	PLAQUE D'ANGLE	1	\$7.25
53	90-51000530	CAP SCREW	BOULON A TETE CYLINDRIQUE	2	\$2.78
54	90-51000540	HEX. NUT	ECROU HEXAGONAL	1	\$2.78
55	90-51000550	SPECIAL SCREW	VIS SPECIALE	1	\$1.74
56	90-51000560	NYLON HEX. NUT	ECROU HEXAGONAL AVEC NYLON	1	\$2.69
57	90-51000570	NYLON HEX. NUT	ECROU HEXAGONAL AVEC NYLON	4	\$3.24
58	90-51000580	PAN HD SCREW	VIS A TETE BOMBEE	5	\$2.50
59	90-51000590	SPRING WASHER	RONDELLE	1	\$2.50
60	90-51000600	WASHER	RONDELLE	2	\$2.50
61	90-51000610	BEVEL GEAR PAD	TAMPON DE L'ENGRENAGE	1	\$2.04
62	90-51000620	BEVEL GEAR	ENGRENAGE	2	\$3.21
63	90-51000630	PAN HD SCREW	VIS A TETE BOMBEE	2	\$2.78
64	90-51000640	ELEVATION CRANK SHAFT	TIGE D'ELEVATION	1	\$8.71
65	90-51000650	PIVOT PLATE REAR	PLAQUE DE PIVOT ARRIERE	1	\$8.71
66	90-51000660	REAR SUPPORT	SUPPORT ARRIERE	1	\$8.96
67	90-51000670	CRANK WHEEL CAP	CAPUCHON DE LA POIGNEE	1	\$1.39
68	90-51000680	SPECIAL SCREW	VIS SPECIALE	1	\$1.74
69	90-51000690	HANDLE	POIGNEE	1	\$3.50
70	90-51000700	BEVEL GEAR WHEEL	ROUE DE L'ENGRENAGE	1	\$5.26
71	90-51000710	COMPRESSION SPRING	RESSORT A COMPRESSION	1	\$1.39
72	90-51000720	FRONT MOUNT	SUPPORT AVANT	1	\$20.42
73	90-51000730	ANGLE ADJUSTMENT WHEEL	ROUE AJUSTEMENT D'ANGLE	2	\$2.85
74	90-51000740	SQUARE NUT	ECROU CARRE	4	\$1.01
75	90-51000750	BEVEL INDICATOR	INDICATEUR D'ANGLE EN BISEAU	1	\$3.21
76	90-51000760	BUSHING DRIVING ROD	BAGUE TIGE DE CONDUITE	1	\$2.56
77	90-51000770	BRACKET DRIVING ROD	SUPPORT TIGE DE CONDUITE	1	\$5.26
78	90-51000780	TOOTH WASHER	RONDELLE DENTELEE	2	\$2.69
79	90-51000790	BEVEL INDICATOR SUPPORT	SUPPORT INDICATEUR D'ANGLE	1	\$6.72
80	90-51000800	MOTOR BRACKET	SUPPORT DE MOTEUR	1	\$58.49
81	90-51000810	UP & DOWN FIX BUSHING	BAGUE DE FIXATION	1	\$1.39
82	90-51000820	CAP SCREW	BOULON A TETE CYLINDRIQUE	1	\$4.35
83	90-51000830	INNER BLADE FLANGE	RONDELLE DE LA LAME INTERIEURE	1	\$5.84
84	KSC-1040T	BLADE	LAME	1	-
85	90-51000850	OUTER BLADE FLANGE	RONDELLE DE LA LAME EXT.	1	\$5.84
86	90-51000860	ARBOR NUT	ECROU DE L'ARBRE	1	\$3.50
87	90-51000870	DUST CHUTE	SORTIE DE POUSSIERE	1	\$27.74
88	90-51000880	WRENCH LOCK KNOB	BOUTON DE VERR. DES CLES	1	\$2.33
89	90-51000890	ADJUSTMENT WRENCH	CLE D'AJUSTEMENT	2	\$8.62
90	90-51000900	KNOB RING	ANNEAU DE BOUTON	1	\$2.62
91	90-51000910	CARRIAGE BOLT	BOULON DE CARROSSERIE	1	\$2.77
92	90-51000920	CORD SNAP RING	ANNEAU DE RETENU DU CORDON	2	\$1.43
93	90-51000930	PAN HD SCREW	VIS A TETE BOMBEE	15	\$2.69
94	90-51000940	ANTI-KICKBACK FINGER STORAGE	RANGEMENT-DOIGTS ANTI-RETOUR	1	\$2.33
95	90-51000950	RESET (OVERLOAD)	RELAJ DE SECURITE (SURCHARGE)	1	\$21.89
96	90-51000960	SWITCH WIRING	FILAGE DE L'INTERRUPTEUR	1	\$11.64

Pricing subject to change without prior notice. / Prix sujet à changement sans préavis.



Parts Pricing List / Liste de Prix des Pièces **KC-5100C**

Diag.	Order # Com.	English Description	Description Française	Qty./Qté.	Price/Prix
97	90-51000970	PAN HD SCREW	VIS A TETE BOMBEE	4	\$2.69
98	90-51000980	WASHER	RONDELLE	4	\$2.50
99	90-51000990	WASHER	RONDELLE	1	\$2.77
100	90-51001000	SWITCH COVER	COUVERCLE DE L'INTERRUPTEUR	1	\$2.77
101	90-51001010	SWITCH	INTERRUPTEUR	1	\$18.96
102	90-51001020	SWITCH BEZEL	PLAQUE DE L'INTERRUPTEUR	1	\$2.85
103	90-51001030	SWITCH BOX	BOITIER DE L'INTERRUPTEUR	1	\$5.78
104	90-51001040	CORD CLAMP PAD	TAMPON DE L'ATTACHE CORDON	1	\$1.39
106	90-51001060	PUSH STICK	POUSSOIR	1	\$13.09
107	90-51001070	POWER CORD	CORDON D'ALIMENTATION	1	\$27.74
109	90-51001090	CORD CLAMP	ATTACHE CORDON	1	\$1.74
110	90-51001100	CORD STORAGE	RANGEMENT DE CORDON	2	\$3.79
111	90-51001110	SAW BODY	BOITIER DE LA SCIE	1	\$131.69
112	90-51001120	HEX. KEY (5MM)	CLE HEXAGONALE (5MM)	1	\$4.54
113	90-51001130	WASHER	RONDELLE	1	\$2.50
114	90-51001140	WASHER	RONDELLE	4	\$2.69
115	90-51001150	WASHER	RONDELLE	1	\$1.68
200	90-51002000	MOTOR ASSEMBLY	MOTEUR ASSEMBLE	1	\$278.11
201	90-51002010	DOUBLE NUT	ECROU DOUBLE	1	\$2.85
202	90-51002020	GEAR HOUSING	BOITIER D'ENGRENAGE	1	\$58.49
203	90-51002030	BEARING	ROULEMENT	2	\$22.12
204	90-51002040	RETAINING RING	ANNEAU DE RETENU	1	\$1.74
205	90-51002050	REDUCTION GEAR	ENGRENAGE DE REDUCTION	1	\$29.21
206	90-51002060	RETAINING RING	ANNEAU DE RETENU	1	\$1.74
207	90-51002070	BEARING	ROULEMENT	1	\$19.74
208	90-51002080	KEY	CLE DE RETENUE	1	\$2.87
209	90-51002090	ARBOR	ARBRE	1	\$26.28
210	90-51002100	PAN HD SCREW	VIS A TETE BOMBEE	2	\$2.50
211	90-51002110	BEARING COVER PLATE	PLAQUE DU ROULEMENT	1	\$6.72
212	90-51002120	WASHER	RONDELLE	3	\$2.50
213	90-51002130	PAN HD SCREW	VIS A TETE BOMBEE	3	\$2.50
214	90-51002140	SELF-TAPPING SCREW	VIS AUTOTARAUDEUSE	4	\$2.87
215	90-51002150	MOTOR END CAP	COUVERCLE DU BOUT DE MOTEUR	1	\$8.71
216	90-51002160	BRUSH HOLDER	PORTE BALAI	2	\$4.32
217	90-51002170	SPRING	RESSORT	2	\$2.85
218	90-51002180	BRUSH	BALAI	2	\$18.96
219	90-51002190	MOTOR HOUSING	BOITIER DU MOTEUR	1	\$33.60
220	90-51002200	SPECIAL SCREW	VIS SPECIALE	4	\$1.74
221	90-51002210	SPRING WASHER	RONDELLE A RESSORT	4	\$2.50
222	90-51002220	WASHER	RONDELLE	4	\$2.50
223	90-51002230	FIELD COIL	BOBINE D'ENTRAINEMENT	1	\$102.41
224	90-51002240	SELF-TAPPING SCREW	VIS AUTOTARAUDEUSE	4	\$2.85
225	90-51002250	BAFFLE	COUVERCLE DE LA BOBINE	1	\$8.71
226	90-51002260	BEARING SLEEVE	MANCHON DU ROULEMENT	1	\$1.39
227	90-51002270	ARMATURE	ARMATURE	1	\$106.81
228	90-51002280	FAN	VENTILATEUR	1	\$7.25
229	90-51002290	BEARING	ROULEMENT	1	\$17.88

Pricing subject to change without prior notice. / Prix sujet à changement sans préavis.



Parts Pricing List / Liste de Prix des Pièces KC-5100C

Diag.	Order # Com.	English Description	Description Française	Qty./Qté.	Price/Prix
230	90-51002300	STRAIN RELIEF	ATTACHE CORDON	1	\$1.39
231	90-51002310	MOTOR CONNECT WIRE	FILAGE DU MOTEUR	1	\$18.96
300	90-51003000	MITER GAUGE ASSEMBLY	GUIDE A ONGLETS ASSEMBLE	1	\$43.85
302	90-51003020	MITER GAUGE BODY	CORPS DU GUIDE A ONGLETS	1	\$20.42
303	90-51003030	INDICATOR	INDICATEUR	1	\$7.25
304	90-51003040	STEEL BALL	BILLE EN ACIER	1	\$1.39
305	90-51003050	COMPRESSION SPRING	RESSORT A COMPRESSION	1	\$1.39
306	90-51003060	SELF-TAPPING SCREW	VIS AUTOTARAUDEUSE	1	\$3.21
307	90-51003070	BAR	BARRE	1	\$29.21
308	90-51003080	WASHER	RONDELLE	2	\$2.50
309	90-51003090	SELF-TAPPING SCREW	VIS AUTOTARAUDEUSE	2	\$3.24
310	90-51003100	HANDLE CAP	CAPUCHON DE LA POIGNEE	1	\$2.85
311	90-51003110	HANDLE	POIGNEE	1	\$8.71
314	90-51003140	PIN	GOUPILLE	1	\$0.86
315	90-51003150	COUTERSUNK WASHER	RONDELLE FRAISEE	1	\$1.39
316	90-51003160	COUTERSUNK HD SCREW	VIS A TETE FRAISEE	1	\$2.59
400	90-51004000	RIVING KNIFE ASSEMBLY	LAME A FENDRE ASSEMBLEE	1	\$52.63
401	90-51004010	NYLON HEX. NUT	ECROU HEXAGONAL AVEC NYLON	1	\$3.43
402	90-51004020	WASHER	RONDELLE	1	\$2.50
403	90-51004030	CLAMP BUSHING	BAGUE DE CRAMPONNEMENT	1	\$2.85
404	90-51004040	COMPRESSION SPRING	RESSORT A COMPRESSION	1	\$1.39
405	90-51004050	RIVING KNIFE DECK	SUPPORT DE LAME A FENDRE	1	\$14.57
406	90-51004060	RIVING KNIFE	LAME A FENDRE	1	\$23.35
407	90-51004070	CLAMP	PLAQUE DE FIXATION	1	\$8.71
408	90-51004080	LOCK LEVER	LEVIER DE VERROUILLAGE	1	\$7.25
409	90-51004090	LOCKING PIN	GOUPILLE DE VERROUILLAGE	1	\$2.33
410	90-51004100	CAP SCREW	BOULON A TETE CYLINDRIQUE	2	\$3.60
411	90-51004110	SET SCREW	VIS SANS TETE	2	\$2.50
412	90-51004120	SPRING PIN	GOUPILLE A RESSORT	1	\$3.06
500	90-51005000	BLADE GUARD ASSEMBLY	PROTEGE LAME ASSEMBLE	1	\$52.63
503	90-51005030	SPECIAL SPRING	RESSORT SPECIALE	2	\$1.39
505	90-51005050	LEFT BLADE GUARD	PROTEGE LAME COTE GAUCHE	1	\$23.35
506	90-51005060	NYLON HEX. NUT	ECROU HEXAGONAL AVEC NYLON	1	\$3.24
507	90-51005070	UPPER GUARD LEVER	LEVIER DU PROTEGE LAME	1	\$8.71
508	90-51005080	TOP BARRIER	PROTEGE LAME CENTRAL	1	\$17.50
510	90-51005100	COIL SPRING	RESSORT	1	\$1.39
511	90-51005110	SPRING PIN	GOUPILLE A RESSORT	1	\$3.24
512	90-51005120	PIN	GOUPILLE	1	\$1.39
515	90-51005150	RIGHT BLADE GUARD	PROTEGE LAME COTE DROIT	1	\$23.35
516	90-51005160	SPRING PIN	GOUPILLE A RESSORT	1	\$3.06
517	90-51005170	BEARING	ROULEMENT	1	\$2.85
518	90-51005180	SPECIAL SCREW	VIS SPECIALE	4	\$1.39
600	90-51006000	ANTI-KICKBACK FINGERS ASS.	DOIGTS ANTI-RETOUR ASSEMBLE	1	\$29.21
601	90-51006010	PIN	GOUPILLE	1	\$1.39
602	90-51006020	ANTI-KICKBACK FINGER LEFT	DOIGT ANTI-RETOUR GAUCHE	1	\$11.64
603	90-51006030	BUTTON BOARD	LEVIER	1	\$5.78
604	90-51006040	ANTI-KICKBACK PAWL	CLIQUET	1	\$8.71

Pricing subject to change without prior notice. / Prix sujet à changement sans préavis.



Parts Pricing List / Liste de Prix des Pièces **KC-5100C**

Diag.	Order # Com.	English Description	Description Française	Qty./Qté.	Price/Prix
605	90-51006050	TORSION SPRING	RESSORT A TORSION	1	\$7.25
606	90-51006060	ANTI-KICKBACK FINGER RIGHT	DOIGT ANTI-RETOUR DROIT	1	\$11.64
607	90-51006070	PAN HD SCREW	VIS A TETE BOMBEE	1	\$2.50
700	90-51007000	RIP FENCE ASSEMBLY	GUIDE A REFENDRE ASSEMBLE	1	\$87.77
701	90-51007010	PAN HD SCREW	VIS A TETE BOMBEE	2	\$2.50
702	90-51007020	WASHER	RONDELLE	4	\$2.50
703	90-51007030	INDICATOR	INDICATEUR	2	\$1.39
705	90-51007050	FENCE BLOCK	BRIDE DU GUIDE	1	\$36.53
706	90-51007060	FENCE SLIDER	PIECE DE GLISSEMENT	2	\$1.39
707	90-51007070	MICRO ADJUST SUPPORT	SUPPORT MICRO REGLAGE	1	\$8.71
708	90-51007080	PAN HD SCREW	VIS A TETE BOMBEE	2	\$2.50
709	90-51007090	PAN HD SCREW	VIS A TETE BOMBEE	2	\$3.06
710	90-51007100	MICRO ADJUST WHEEL	ROUE MICRO REGLAGE	1	\$7.25
711	90-51007110	FENCE LOCK LEVER	LEVIER DE VERROUILLAGE	1	\$10.18
712	90-51007120	BUSHING	BAGUE	1	\$1.89
713	90-51007130	FENCE ROD	TIGE DU GUIDE	1	\$10.18
715	90-51007150	FLANGE HD HEX. BOLT	BOULON HEXAGONAL A TETE BRIDEE	2	\$2.69
717	90-51007170	FENCE BODY	GUIDE	1	\$48.24
718	90-51007180	COMPRESSION SPRING	RESSORT A COMPRESSION	1	\$1.74
719	90-51007190	REAR SLIDE	PIECE DE GLISSEMENT ARRIERE	1	\$1.74
720	90-51007200	REAR CLAMPING PLATE	PLAQUE DE CRAMPONNEMENT ARR.	1	\$7.25
721	90-51007210	SELF-TAPPING SCREW	VIS AUTOTARAUDEUSE	1	\$2.87
722	90-51007220	NYLON HEX. NUT	ECROU HEXAGONAL AVEC NYLON	1	\$3.43
723	90-51007230	REAR CAP	CAPUCHON ARRIERE	1	\$5.78
800	90-51008000	STAND ASSEMBLY	SUPPORT PLIANT ASSEMBLE	1	\$204.90
801	90-51008010	SELF-TAPPING SCREW	VIS AUTOTARAUDEUSE	7	\$2.71
802	90-51008020	FOOT PAD	PIED	4	\$4.32
804	90-51008040	UPPER U-BRACKET	SUPPORT EN "U" SUPERIEUR	1	\$43.85
806	90-51008060	CARRIAGE BOLT	BOULON DE CARROSSERIE	8	\$2.77
807	90-51008070	SMALL SPACER	PETIT ESPACEUR	4	\$1.39
808	90-51008080	NYLON HEX. NUT	ECROU HEXAGONAL AVEC NYLON	10	\$2.69
809	90-51008090	MID BRACKET	SUPPORT DU MILIEU	1	\$11.64
810	90-51008100	ROUND TUBE END CAP	CAPUCHON DU SUPPORT	12	\$2.85
811	90-51008110	REAR BRACKET	SUPPORT ARRIERE	1	\$14.57
812	90-51008120	WING NUT	ECROU PAPILLON	4	\$26.28
813	90-51008130	ADJUSTABLE FOOT	PIED AJUSTABLE	2	\$5.78
814	90-51008140	LARGE SPACER	GRAND ESPACEUR	4	\$2.85
815	90-51008150	SPECIAL SCREW	VIS SPECIALE	1	\$2.77
816	90-51008160	LOCKING LATCH	LOQUET DE VERROUILLAGE	1	\$5.26
818	90-51008180	LATCH SUPPORT	SUPPORT DU LOQUET	1	\$5.78
819	90-51008190	SPRING	RESSORT	1	\$1.39
820	90-51008200	WASHER	RONDELLE	1	\$2.50
821	90-51008210	NYLON HEX. NUT	ECROU HEXAGONAL AVEC NYLON	1	\$3.43
822	90-51008220	WHEEL CAP	CAPUCHON DE LA ROUE	2	\$2.85
823	90-51008230	WASHER	RONDELLE	2	\$2.69
824	90-51008240	8" WHEEL	ROUE DE 8"	2	\$13.10
825	90-51008250	FRONT BRACKET	SUPPORT AVANT	1	\$20.42

Pricing subject to change without prior notice. / Prix sujet à changement sans préavis.



® Parts Pricing List / Liste de Prix des Pièces **KC-5100C**

Diag.	Order # Com.	English Description	Description Française	Qty./Qté.	Price/Prix
826	90-51008260	RIGHT HANDLE	POIGNEE DROITE	1	\$7.25
826-1	90-51008261	LEFT HANDLE	POIGNEE GAUCHE	1	\$7.25
827	90-51008270	HANDLE FOAM	MOUSSE DE LA POIGNEE	2	\$5.78
828	90-51008280	UPPER END CAP	CAPUCHON DE LA POIGNEE	2	\$2.85
829	90-51008290	CAP SCREW	BOULON A TETE CYLINDRIQUE	4	\$3.24
	90-5100MBIL	BILINGUAL MANUAL FOR KC-5100C	MANUEL BILINGUE POUR KC-5100C	1	\$24.17